

# qualYnk<sup>®</sup>

Quality control expert Solution

© All rights reserved BYG4lab<sup>®</sup>.



## Evaluation of performance in the initial phase

The Method Validation module offers a complete and integrated solution for test performance evaluations :



### INTEGRATION OF RESULTS

- In LIS / MW connection,
- Imports by file,
- Manual input.



### STATISTICAL PROCESSING

#### Procedures :

- Repeatability,
- Reproducibility,
- Comparisons,
- Measurement uncertainties,

- ANOVA Test,
- Contamination,
- Linearity.

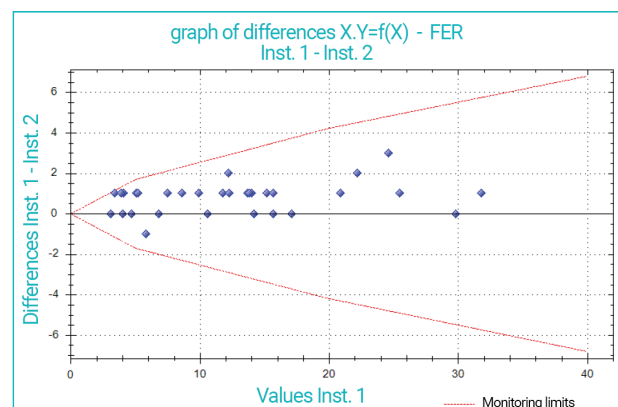


### SUMMARY REPORTS

- Table of values, graphs, detailed calculations,
- Conclusions,
- Complete traceability.

### Acceptability standards

- ☒ RICOS
  - ☐ RICOS Opt.(2014) - Reference CV : 3%
  - ☒ RICOS S.(2014) - Reference CV : 5%
  - ☐ RICOS Min.(2014) - Reference CV : 8%
- ☒ EFLM
  - ☐ EFLM Opt.(11/12/20) - Reference CV : 2%
  - ☒ EFLM S.(11/12/20) - Reference CV : 5%
  - ☐ EFLM Min.(11/12/20) - Reference CV : 7%
- ☐ CLIA
- ☐ Labo value
- ☐ Suppliers 1
- ☐ Suppliers 2
- ☐ Suppliers 3

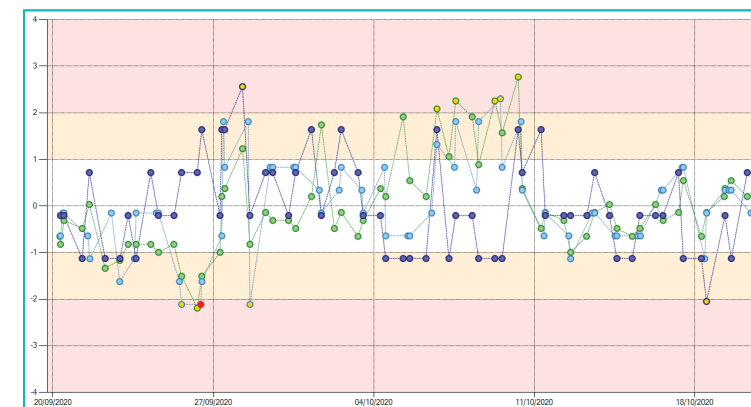


## Evaluation of performance in the continuous phase

Panel of functionalities allowing **daily management of the IQC and proactive follow-up** through trend analysis :

### MONITORING THE ICQ STRATEGY

- Management of compliance acceptance criteria,
- Westgard rules configurable by analysis,
- Unitary or grouped management of IQC,
- Clinical impact assessment - with Total Error criteria,
- Inter-instrument comparison - single control chart,
- Moving average: impact analysis following IQC rejection,
- Moving average: inter-instrument comparison.



### PREVENTIVE APPROACH / PERFORMANCE REVIEW

#### Trend analysis - accuracy and precision :

- Intra laboratory,
- Inter-laboratory / peer groups.

#### Inter-instrument comparison :

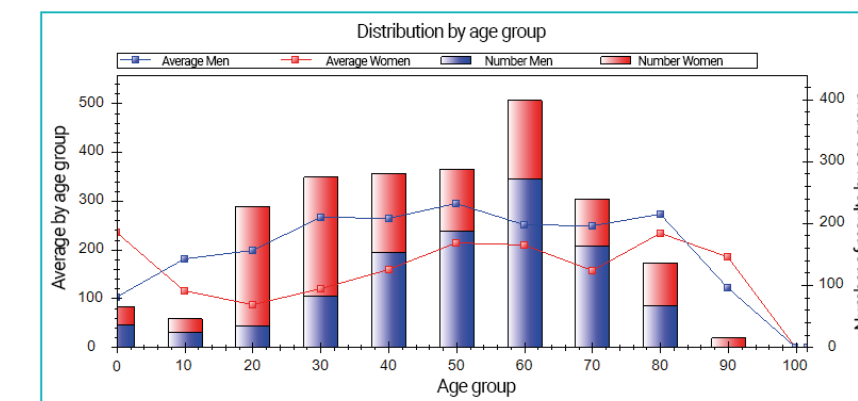
- Based on IQC,
- Based on Patient moving average.

#### Accuracy :

- EQA results consolidation / peer groups,
- SDI monitoring, % bias.

#### Reference values :

- Statistics on patient results,
- Tables and graphs.



Yline®

A UNIQUE AND INNOVATIVE  
WEB-BASED ARCHITECTURE



ORGANISATIONAL AND  
ECONOMIC EFFICIENCY



HARMONISATION /  
CENTRALISATION OF PROCESSES



RELIABILITY - TRACEABILITY



OPENNESS: MULTI-INSTRUMENT,  
LIS, MIDDLEWARE



## The six pillars of BYG4lab®

